

**Rinnai**

Continuous Flow Hot Water



Experience Our Innovation

# Experience Our Innovation

---

For 40 years Australians have been enjoying the comfort, convenience and reliability of Rinnai gas appliances. Our innovative products are designed with the environment in mind, with low emission technology and high efficiencies, as well as a host of other great features.

Rinnai is committed to ongoing innovation - delivering efficient, well designed and engineered lifestyle solutions offering a host of benefits including versatility, safety, control, water conservation as well as guaranteed reliability. Backed with extensive warranty's and after sales service teams. Through innovation, we will endeavour to continue offering superior ranges of home appliances that provide a clear insight into what the future holds for Australian homes.

## Why choose Rinnai

There are many types of hot water systems available for Australian homes. Rinnai hot water systems bring you the latest advanced technologies that provide you with choices that can meet individual needs. Whether relating to safety, convenience, available space, environmental needs or ongoing running costs, Rinnai will have a system that suits.

## What is the Rinnai INFINITY?

The Rinnai INFINITY is a gas continuous flow hot water unit – meaning that it only heats the water when you need it. As a tap is turned on, the unit senses the flow and begins to heat the water instantaneously. Highly efficient and compact, these units can also be temperature controlled for added safety & convenience. In addition they are literally 'continuous flow' and will never run out of hot water – even if you are last in the shower!

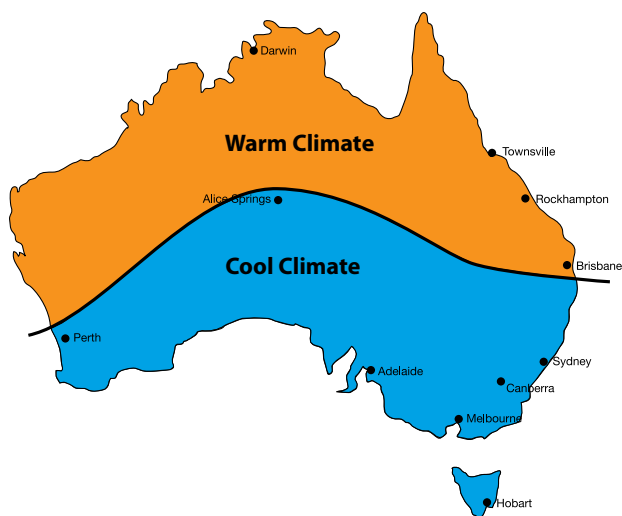
## CONTENTS

- 02 What is the Rinnai INFINITY
- 03 Selection Guide
- 04 Range Overview
- 06 High Efficiency Water Saver Model  
- Rinnai INFINITY 26 Smartstart®
- 07 Accessories
- 08 Water Controllers
- 10 Specifications and Warranty
- 11 Additional Rinnai Gas  
Appliances



### How to select the right size model for your home

Selecting a Continuous flow system is easy! The simplest way to identify your hot water needs is by the number of shower outlets in your home. Output based on number of showers ensures temperatures and pressure stability when you need it most. Rinnai has comfort and luxury in mind with Enhanced Combustion Technology (ECT) ensuring you get the most out of your low flow shower rose.



Temperature map zoning based on seasonal ambient water temperatures

Applicable Models		INFINITY 16	INFINITY 20	INFINITY 26	INFINITY 26i	Enviro 26	26 SmartStart	INFINITY 32	Enviro 32
No. of shower outlets*	Warm	1	1-2	1-3	1-3	1-3	1-3	1-4	1-4
No. of shower outlets*	Cool	1	1	1-2	1-2	1-2	1-2	1-3	1-3

\*Sizing assumes AAA or "3 star" outlets. For non WELS rated or WELS rated fixtures with higher flow outlets (AA, A, 2 star or 1 star rated) a larger size appliance or additional appliance may be required to delivery adequate performance. Consult with your hot water specialist.

### Important considerations

#### Household Energy Use

Hot Water systems in general are the largest users of energy in most Australian homes, so it's important to consider all the factors before selecting a hot water system. High efficiency, correctly sized hot water systems can directly lower the hot water running costs for the average family.

#### Environment

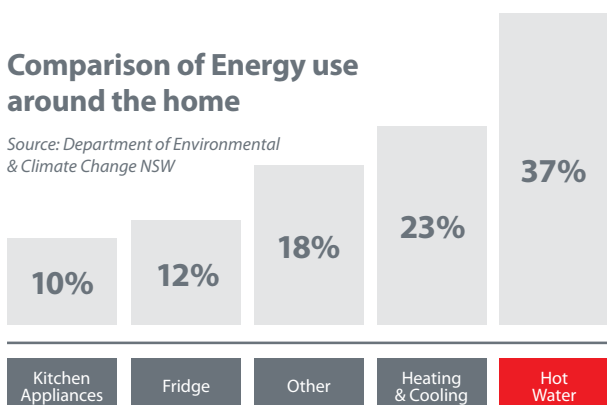
When purchasing a new hot water system, it is a good idea to consider the impact on the environment. Gas is one of the most greenhouse friendly fuel sources available. By choosing a Rinnai Gas Hot Water System you can make a difference by reducing our carbon footprint.

#### Star ratings

The Rinnai INFINITY Continuous Flow range is highly efficient - all models exceed 5 stars with the most efficient Infinity Enviro 26 model having an equivalent of 7 stars!

### Comparison of Energy use around the home

Source: Department of Environmental & Climate Change NSW



Rating Labels

**Rinnai**



## Rinnai INFINITY Continuous Flow

the original and still No.1

Rinnai revolutionised the Australian water heating market in the early 90's when it launched the first fully electronic Gas Continuous Flow Hot Water System. Appropriately named the Rinnai INFINITY because it never ran out of hot water, today systems are even more sophisticated – designed with the environment in mind with low emission burners, high efficiencies and low flow rates compatible with water saving (WELS) outlets and showers.

### How Continuous Flow Works

The Rinnai INFINITY heats water as it passes through the unit, which means you are only using energy when you turn the tap on. It is an extremely energy efficient choice as the water is only heated when required, lowering running costs and greenhouse gas emissions substantially. Add to this the convenience of precise water and temperature control with the installation of Water Controllers and it's compact size, which allows it to be installed almost anywhere, and you have the most technologically advanced hot water system available today!

### Benefits at a glance

- Quality Japanese design and manufacturing
- Precise temperature control for safety & convenience
- Compact design allowing installation flexibility
- Suitable for higher incoming (ambient) water temperatures
- Compatible with low flow rated shower fixtures (3 Star - 7.0 to 9.0 l/min)
- Operate 2 showers at once
- Ability to install up to 4 Water Controllers (*see page 9 for further information*)
- The comfort that Antifrost is standard on all external models
- 12 year warranty on the heat exchanger

### The choice is yours...

Rinnai has the largest selection of models to suit both new & existing Australian homes. Fundamentally there are 3 types of Rinnai INFINITY continuous flow hot water systems, each with innovative features allowing choice based on your personal preferences:

### Classic Model Range

- High efficiency 5+ Star Energy Rated
- Full range of models from 16 to 32 litres including an internal 26 model
- Available in both 50°C & 60°C - talk to your installer about which is best for your home design

### Classic Range 26Plus Model

- High efficiency 5.8 Star rating
- Slimline casing with a stylish silver metallic finish
- Inbuilt Status Monitor (maintenance)
- Available in 60°C preset only

### Smartstart Water Saver Model

- High efficiency 5.8 Star Rated
- Includes a pre-heat system to reduce water wastage
- Supplied as 50°C preset temperature

### High Efficiency Enviro Models

- Australia's first 7 Star equivalent Hot Water System (26 Litre)
- Uses less gas, substantially reducing running costs
- Around 1/6th of the Greenhouse Emissions of a standard electric hot water
- Also available as a 32 Litre – 6.8 Star equivalent
- Supplied as 60°C preset temperature



Classic Range  
(16, 20, 26, 26i, 26 Plus)



INFINITY Water Saver Model  
(26 Smartstart)



High Efficiency Model  
(26, 32 Enviro)

### Models

- INFINITY Classic  
16, 20, 26, 26i, 26Plus and 32  
Litre
- INFINITY 26 Smartstart®
- INFINITY 26 and 32 Enviro

### Colours

**White** - INFINITY 16, 20, 26, 26i,  
26 Smartstart and 32  
**Silver Metallic** - INFINITY 26Plus  
and Enviro Models

### Gas Types

All models are available in both  
Natural Gas and LPG

**Rinnai**

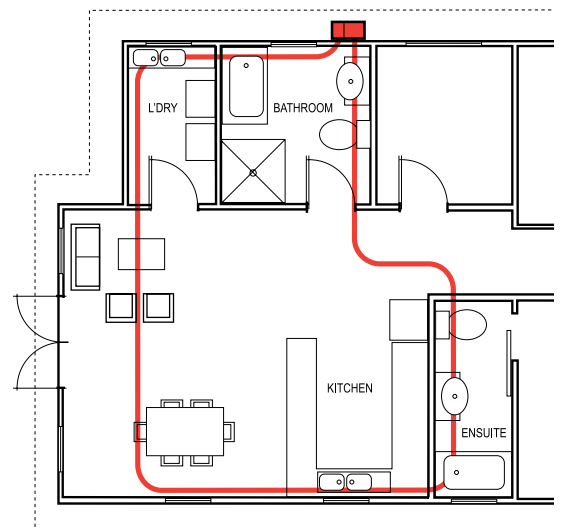


## High Efficiency Water Saver Model

### Rinnai INFINITY 26 Smartstart®

Introducing Australia's first dedicated 26 litre 'Water Saving' hot water system. It has all the great features of the standard Rinnai INFINITY Continuous Flow, with the addition of a circulating pump to pre-heat the water in the pipes. This may take a minute or two depending on the size of your home, but will help you save literally tens of thousands of litres of water over the life of your hot water system.

- High efficiency hot water with an inbuilt hot water circulation system
- Pre-heats the water in the pipes before you turn on the hot tap
- The Smartstart® is an 'on-demand' pump system that only operates when required and automatically shuts off, further saving energy
- It is activated in any room that has a Water Controller installed
- Saves literally thousands of litres of water often flushed down the drain
- Supplied as 50°C preset temperature
- 12 year warranty on the Heat Exchanger



For further information on the operation of the Smartstart®, please see page 7

## Accessories



The following accessories are available for the Rinnai Continuous Flow Models.

### Save Water with your Rinnai INFINITY

In addition to the new Rinnai INFINITY 26 Smartstart (fully integrated unit on page 6), Rinnai also offer the Smartstart® as an optional feature for any Rinnai INFINITY Continuous Flow hot water system, including the highest efficiency Enviro range.

All Smartstart® water saver systems pre-heat the water in the pipes before you turn on the hot tap - reducing water wastage whenever a hot tap is turned on. It is usually plumbed as a 'ring-main' or loop around the house. The system is best suited to new homes, renovations or retrofitting into houses where access can be gained to run additional piping. We recommend discussing suitability with your plumber.

Operation is enabled via any of Rinnai's Water Controllers. It's a worthwhile investment to save the most precious of our natural resources – water!

### Pipe Cover

Easily attached to the Rinnai INFINITY hot water systems to provide a clean and smooth finish to the installation, hiding unsightly pipe work and sheltering the power point.

### Wall Cavity Recess Box

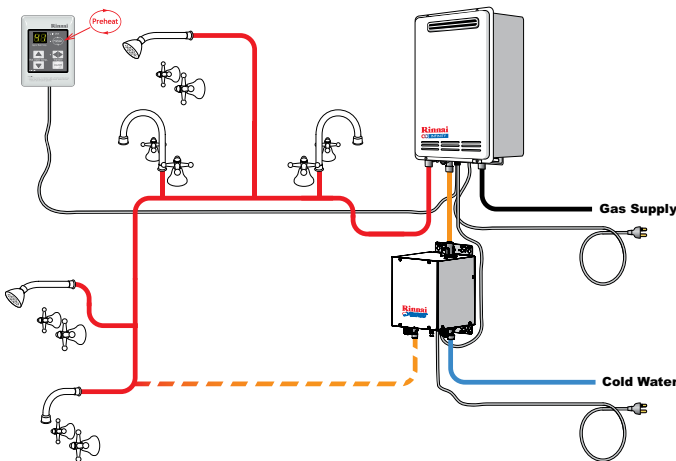
Allows you to hide the Rinnai INFINITY inside the wall cavity, saving you precious space, and giving a neat and tidy finish. UV Stabilised and fully paintable to blend with any colour scheme. Optional wall frame available to suit weatherboard walls.

### Security Bracket

Secure your investment with Rinnai's quick and easy to install security bracket. **Note** For added security a cage accessory is also available.

### Flue Diverter

The sideways flue diverter directs the flue gases sideways. This may allow installation into areas with restricted ventilation, such as balconies.



**Please note:** The diagram above shows a Typical Smartstart® Installation. All Smartstart® installations require at least one Rinnai Water Controller to be installed to activate the system. All Rinnai Water Controllers are compatible. For further information on Water Controllers please refer to page 9 of this brochure.



Pipe Covers



Wall Cavity Recess Box



Security Bracket



Flue Diverter

**Rinnai**



**Rinnai**

**WARNING**  
• Check the transfer or water fill light is always on when the  
• Please read the Operation Instructions Manual carefully before  
use and correct operation.



## Get the most out of your Rinnai INFINITY with **Water Controllers**

To experience all the benefits of Continuous Flow hot water systems, Rinnai strongly recommend installing Water Controllers with all models. Rinnai's Controllers enable you to simply set your desired temperature, turn on the hot tap and enjoy... no more juggling the hot and cold taps and of course this also saves water.

### Temperature Fluctuations

Continuous Flow water heaters like all types of water heaters can experience temperature fluctuations when other taps are turned on. Water controllers avoid this by maintaining an exact temperature even when other taps are used or a toilet is flushed.

### Safety

The installation of Water Controllers allow you to select the exact temperature you need, reducing the chance of scalds. Our Deluxe Controllers have the added feature of an automatic bath fill which stops the water flow at your desired level. This also means that young children can no longer play with the hot tap because no water will come from it!

### Ease of Use

Simply select the temperature you want and turn on the hot tap. Not only can you experience total control in the bathroom, but unlike other Continuous Flow hot water systems, you can have up to four controllers... a controller for the Bathroom, Kitchen, Ensuite and even the Laundry.

### Extended Warranty

Rinnai INFINITY installations with 2 or more Water Controllers receive an extended parts & labour warranty, from 3 to 5 years.

## Types of Rinnai Water Controllers

From a functionality point of view, Rinnai have 2 types of Controllers

### Universal Controllers

(Both Wireless & Hard-wired versions) with the following functions:

- Precise temperature control
- Room (priority) transfer
- Smartstart® preheat system functions
- Child Lock (Wireless only).

### Deluxe Controllers

(Hard-wired only) with all of the functions of the Universal model with addition of:

- Master Controller usually installed in the Kitchen
- Separate Bathroom Controllers
- Automatic Bath fill function
- Shower saver feature – preset your desired litres
- Digital Clock, Speaker & Volume Controls

### Wireless vs Hard-wired Controllers

Up to 4 Water Controllers can be installed throughout a home for all Rinnai INFINITY models in almost any combination - Wired, Wireless & Deluxe. It is not always possible to run wires in all installations so we have introduced both options for the Universal model catering for different situations.



Wireless Controller



Universal Controller



Deluxe Kitchen Controller



Deluxe Bathroom Controller

### Handy Tip

Wireless Universal Controllers are the easiest and quickest to install and are particularly suitable for retrofitting into existing homes

Hard wired Universal Controllers are usually cheaper to purchase and wiring can often be run through the roof and walls by a handy person

## Specifications - Continuous Flow

INFINITY Model	Classic						Water Saver	High Efficiency	
									
	16	20	26	26Plus	26i	32	26 Smartstart®	Enviro	Enviro
Installation	External	External	External	External	Internal	External	External	External	External
Hot Water Capacity raised at 25°C (unmixed)	16 L/min	20 L/min	26 L/min	26 L/min	26 L/min	32 L/min	26 L/min	26 L/min	32 L/min
Hot Water Capacity raised at 20°C (unmixed)	20 L/min	24 L/min	26 L/min	30 L/min	32 L/min	37 L/min	26 L/min	35 L/min	37 L/min
Gas Rate MJ/h (Max)	125	160	199	199	195	250	199	172	211
AS4553 Efficiency Star Rating	6.2	5.9	5.8	5.8	6.1	5.6	5.8	7.0 Equivalent	6.8 Equivalent
Pre-set temperature (°C)	50°C/60°C	50°C/60°C	50°C/60°C	60°C	50°C/60°C	50°C/60°C	50°C	60°C	60°C

## Warranty - Continuous Flow Systems

Continuous Flow Water Heaters <sup>(3)</sup>		All INFINITY Models		Heavy Duty (HD) Models		SmartStart® Water Saver	Water Controllers	Accessories <sup>(4)</sup>
		Heat Exchanger	All other components	Heat Exchanger	All other components			
Domestic Use	Parts	12 Years	3 Years <sup>(2)</sup>	12 Years	3 Years <sup>(2)</sup>	3 Years	3 Years	1 Year
	Labour	3 Years <sup>(2)</sup>	3 Years <sup>(2)</sup>	3 Years <sup>(2)</sup>	3 Years <sup>(2)</sup>	3 Years	3 Years	1 Year
Commercial Use	Parts	1 Year	1 Year	5 Years <sup>(1)</sup>	1 Year	1 Year	1 Year	1 Year
	Labour	1 Year	1 Year	1 Year	1 Year	1 Year	1 Year	1 Year

(1) One (1) year warranty on Heat Exchanger when pre-set to 85 or 95°C. (2) 5 Years if two or more controllers are installed in domestic applications. (3) The models in this table are unsuitable for solar hot water applications. Any failure or service issue when installed in a solar hot water application is not covered by warranty. Exceptions to this are Heavy Duty models for Rinnai Demand Duo commercial applications using solar boosting and models in this table converted by Rinnai specifically for solar applications and for use in Rinnai solar hot water systems. See Conditions and Exclusions for more details. (4) Accessories include pipe covers, recess boxes, security brackets and flue diverters and coaxial flueing.

### Please note:

For full definitions of Domestic and Commercial use, along with the full conditions and exclusions, please refer to [rinnai.com.au](http://rinnai.com.au)

Dimensions are subject to production tolerances and may vary slightly from those given.

Rinnai Australia Pty Ltd reserves the right to make modifications and change specifications without notice.

## Additional Rinnai Gas Appliances

---

In addition to the hot water products in this brochure, Rinnai have many other great appliances to compliment both indoor and outdoor lifestyle solutions.

### Gas Boosted Solar Hot Water

Gas Boosted Systems are powered with the same technology as the Rinnai INFINITY. This means you can enjoy the benefits of Continuous Flow hot water, pre-heated with energy from the sun. For further information on applicable rebates, please refer to our on-line estimator at [rinnai.com.au](http://rinnai.com.au)

### Portable Gas Space Heating

The Rinnai range of Portable Heaters are a highly efficient and flexible home heating alternative. They require no installation and can be stored away when not used. There are 3 forms of heating available - Radiant heat, Convection heat gently circulated with a fan and a combination of both Radiant and Convection heat.

### Flued Gas Space Heating

The Rinnai range of Flued Heaters are permanently installed in a home utilising fixed fluing to ensure there are no indoor emissions. They offer powerful heat in a wide range of designs and styles. They are perfect for homes undergoing renovations and in particular extensions where an additional efficient heating source is required.

### Gas Log Flame Fires

Rinnai has an extensive range of Gas Log Flame Fires that have the ambience of a real fire without the hassle or mess. Not only do they look great for those formal or romantic occasions, they are also a powerful source of heating. Additionally, Rinnai have a range of purely decorative Flame Fires including a model that is designed to compliment outdoor entertaining areas.

### Need help with an installation?

In most situations Rinnai retailers can assist with the installation of our appliances. Should this not be the case, Rinnai has an installation service available direct to the end-user. Any installation of a Rinnai appliance is a specialist process and requires trained professional installers to ensure safe and efficient operation of the appliance. This is particularly relevant for connection to gas, electrical changeovers and the installation of Solar Collectors. Our Rinnai installers are not only very familiar with our products, but are fully insured and OH&S compliant. Be confident in your installation by employing an Authorised Rinnai Contractor.

For further information, please call 1300 555 545

### Request a brochure

If you would like a brochure from any of product ranges you can call 13 14 19 or view and download online at [rinnai.com.au](http://rinnai.com.au)



Gas Boosted Solar Hot Water



Portable Gas Space Heating



Flued Gas Space Heating



Gas Log Flame Fires



All Greenhouse Gas emissions associated with producing this printed product have been offset.

This product is 100% Carbon Neutral



RECYCLED  
Paper made from recycled material  
FSC® C014308



**Rinnai**

**RINNAI AUSTRALIA PTY. LTD.**

ABN 74 005 138 769

10-11 Walker Street Braeside VIC 3195

For further information visit

**[www.rinnai.com.au](http://www.rinnai.com.au)**

**or call 1300 555 545**