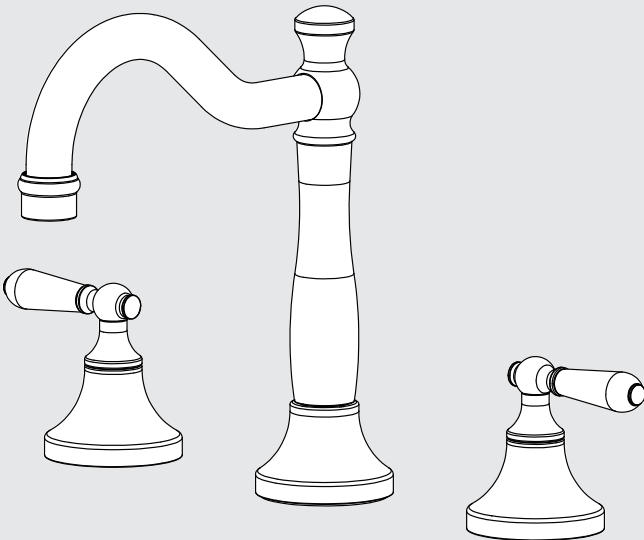


# York Basin Set

# Nero



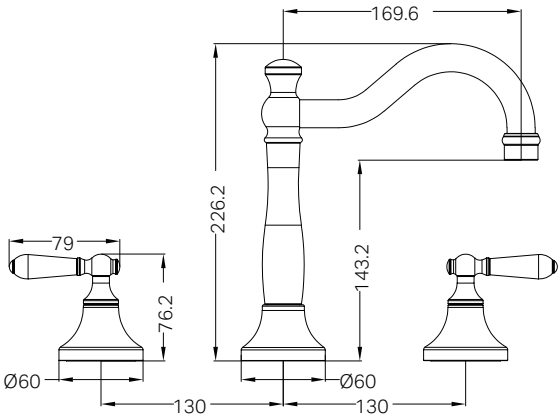
Lead Free



Versions:202506



## Drawing



## Specifications

**Watermark License**  
WM-060073  
**Temperature Rating**  
Min 1°C-Max 75°C  
**Pressure Rating**  
Min 150kpa - Max 500kpa

## Finish & SKU

- CHROME WITH WHITE PORCELAIN LEVER  
NR692102a01CH
- MATTE BLACK WITH WHITE PORCELAIN LEVER  
NR692102a01MB
- AGED BRASS WITH WHITE PORCELAIN LEVER  
NR692102a01AB
- BRUSHED NICKEL WITH WHITE PORCELAIN LEVER  
NR692102a01BN
- CHROME WITH BLACK PORCELAIN LEVER  
NR692102a03CH

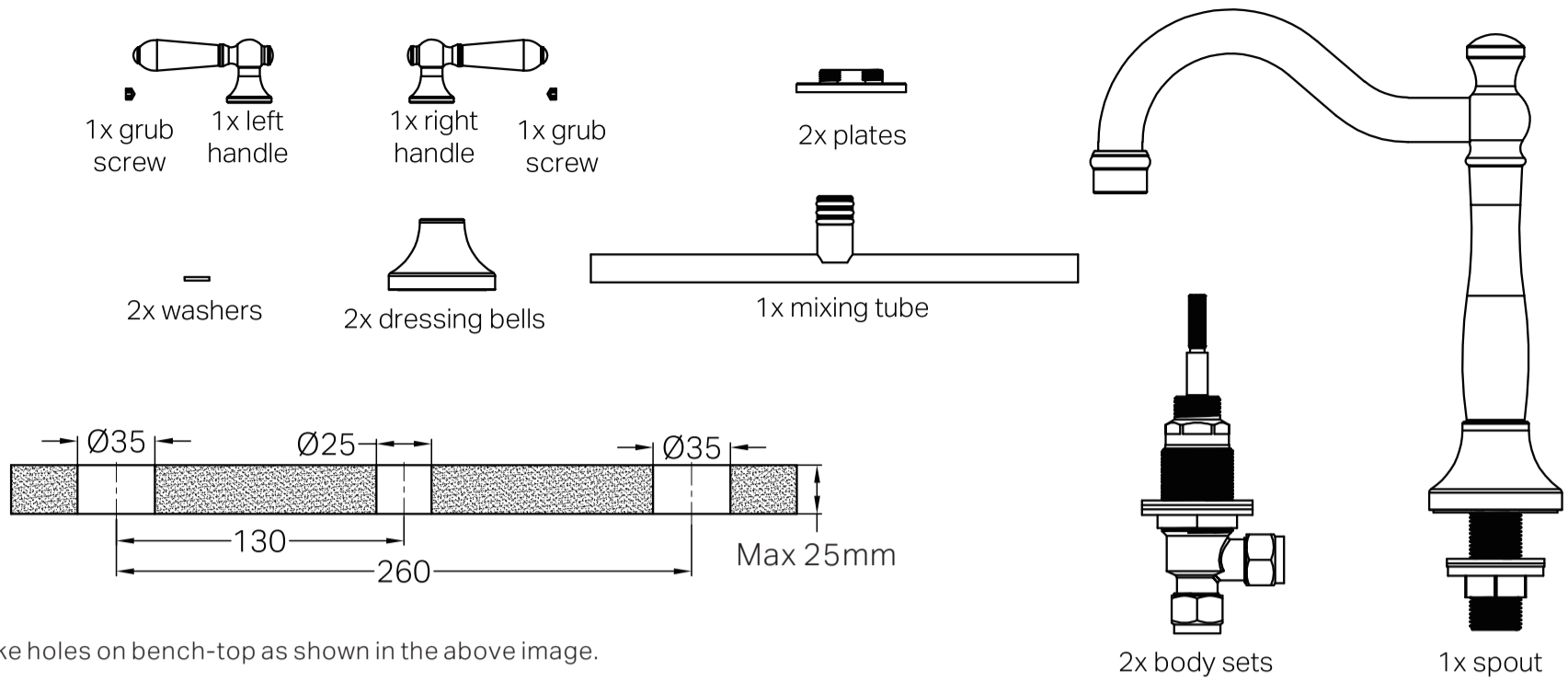
- CHROME WITH METAL LEVER  
NR692102a02CH
- MATTE BLACK WITH METAL LEVER  
NR692102a02MB
- AGED BRASS WITH METAL LEVER  
NR692102a02AB
- BRUSHED NICKEL WITH METAL LEVER  
NR692102a02BN

## Packaging Includes

- 1x Spout
- 2x Wall Top Handles
- 1x Mixing Tube

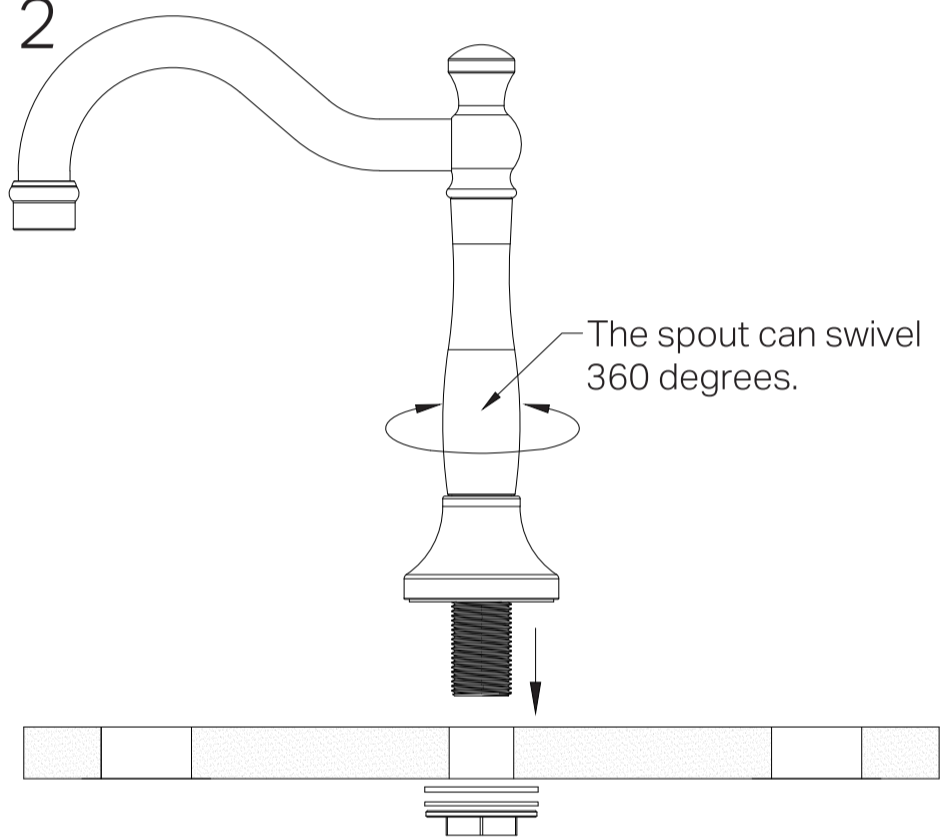
\*Dimensions are nominal measurements only.

1



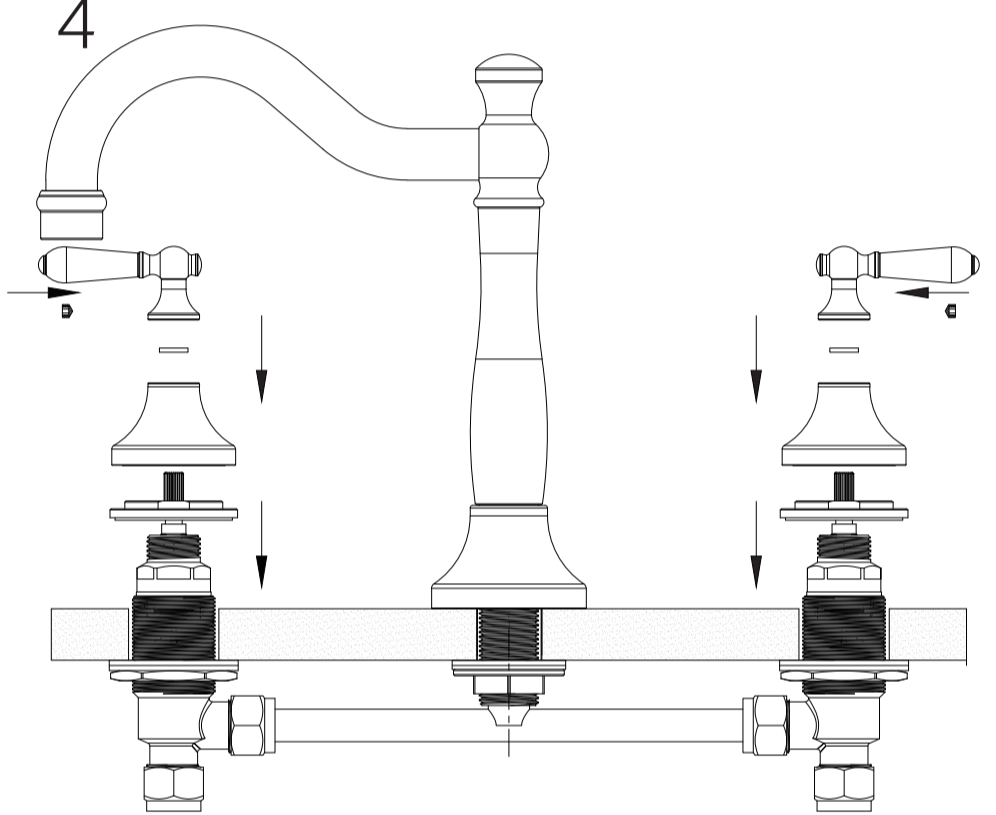
- Make holes on bench-top as shown in the above image.

2



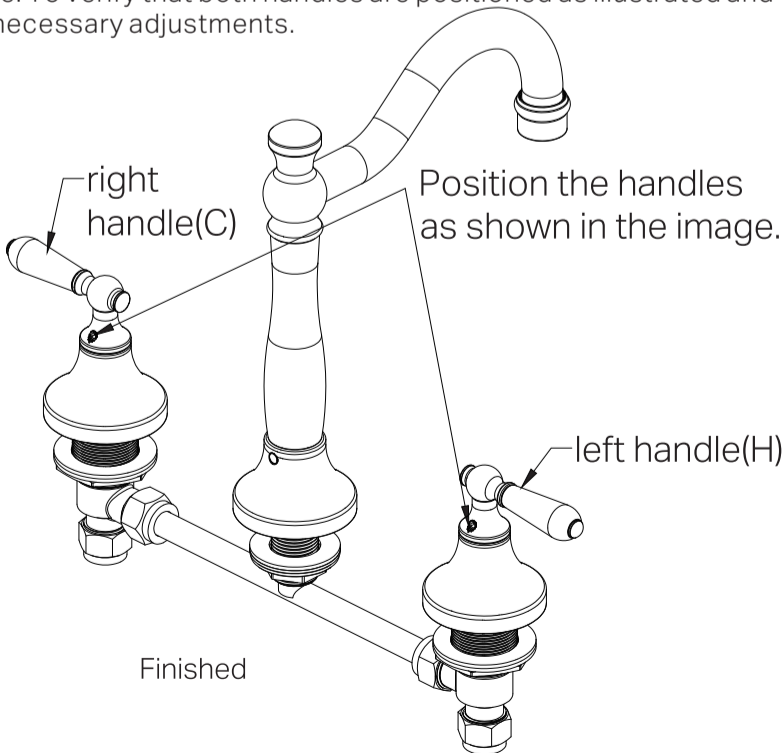
- Remove the hex nut and washer from the spout.
- Insert the spout into the designated opening on the bench-top.
- From underneath the bench-top, place the washer onto the spout, then secure the spout by tightening the hex nut.

4

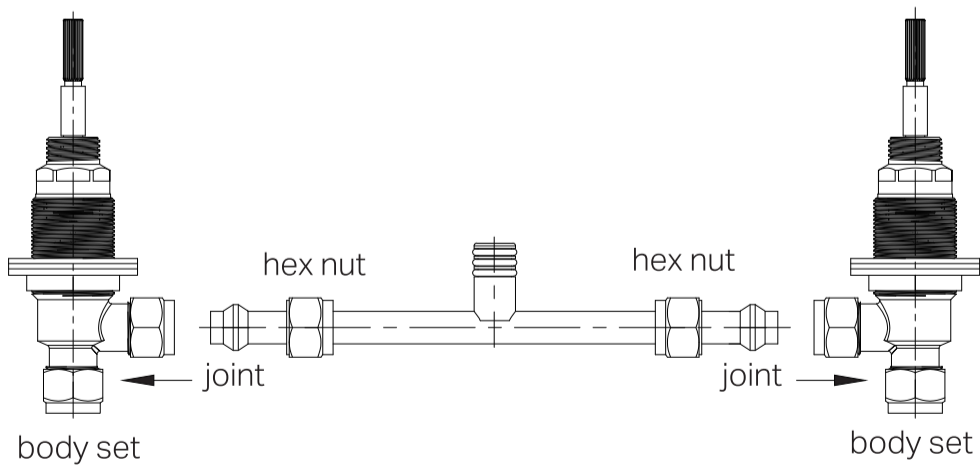


- Insert the pre-assembled mixer (from Step 3) through the bottom opening of the bench-top.
- Place the plates over the bench-top and firmly tighten the plates using a wrench.
- Slide the dressing bells up towards the bench-top, ensuring the washer is placed inside the handles.
- Correctly position the right and left handles as indicated in the diagram.
- From below, tighten the hex nuts on the mixing tube with a wrench to secure the assembly.

Please note: To verify that both handles are positioned as illustrated and make any necessary adjustments.



3



- Detach the hex nut and joint from the mixer's body set.
- Align and insert the joint into the body sets.
- Secure the joint by hand-tightening the hex nuts onto the mixing tube. Do not over-tighten, as adjustments may be needed later.

Nero

