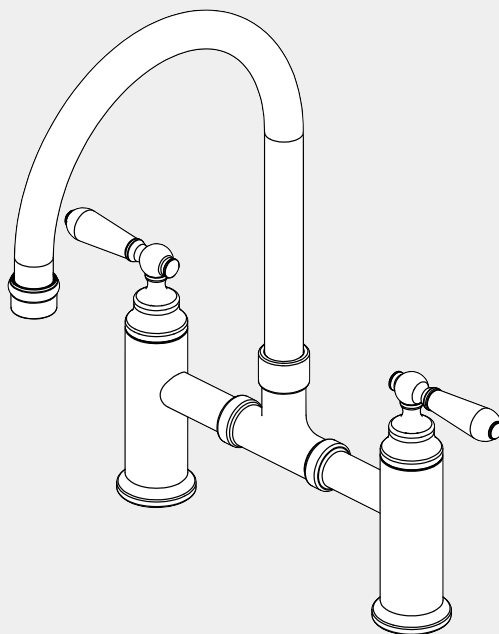


York Bridge Kitchen Set

Nero



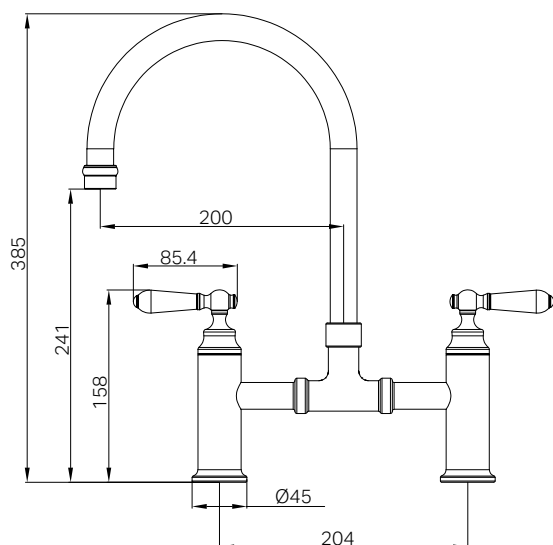
Lead Free



Versions:202412



Drawing



Specifications

Watermark License

WM-060073

Temperature Rating

Min 1°C-Max 75°C

Pressure Rating

Min 150kpa - Max 500kpa

Finish & SKU

Chrome
NR692107bCH

Matte Black
NR692107bMB

AGED BRASS
NR692107bAB

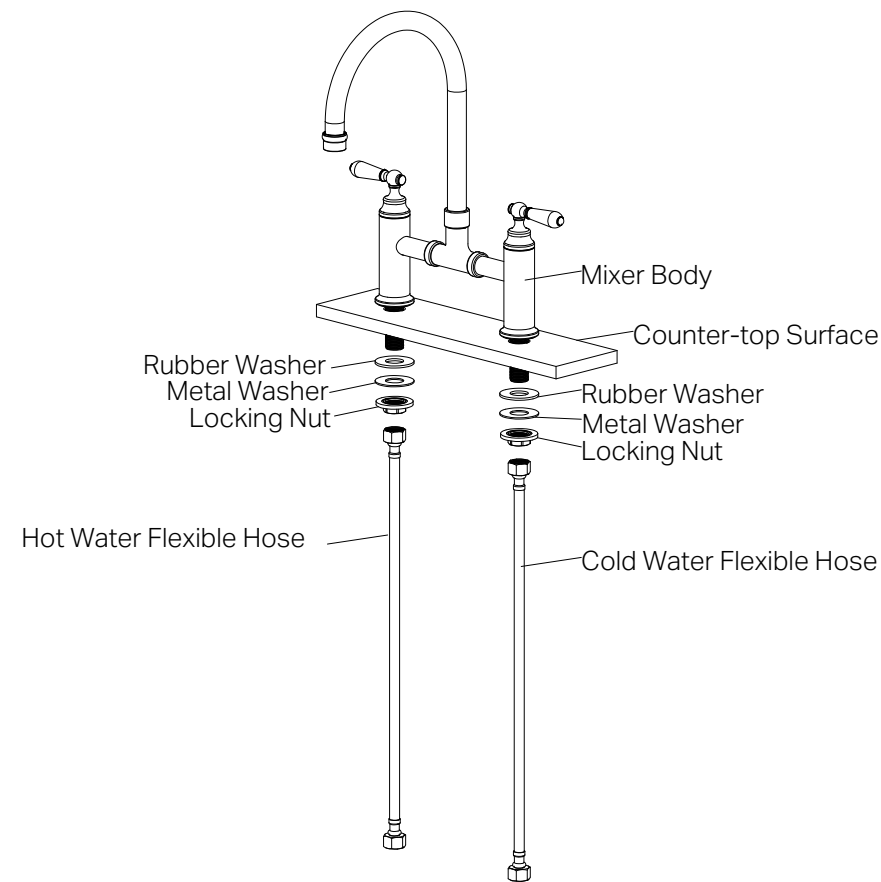
Brushed Nickel
NR692107bBN

Packaging Includes

1x Kitchen Mixer
1x Installation Kit
2x Flexible hoses

*Dimensions are nominal measurements only.

Installation Instruction



GENERAL INSTRUCTIONS:

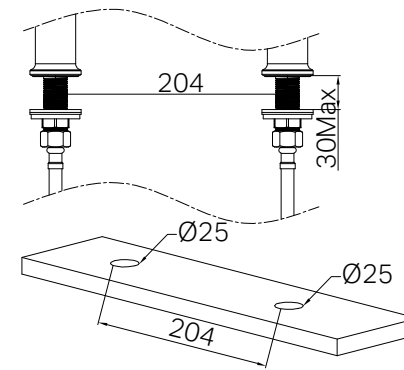
- This product must be installed by a licensed plumber. Ensure that the installation complies with the Australian/New Zealand Standard AS/NZS 3500.
- All pipework must be thoroughly flushed prior to the installation of the mixer. In-line filters must be fitted on both hot and cold supplies to prevent foreign particles from damaging the ceramic cartridge.
- All outlets used primarily for personal hygiene must deliver water at a safe temperature in accordance with regional regulations.

NOTE:

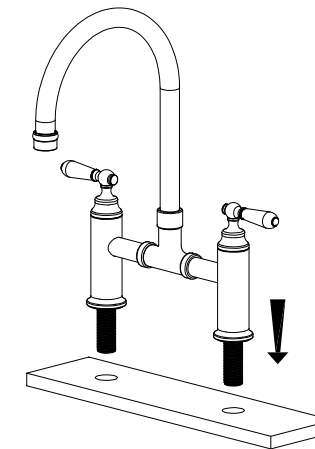
- Do not hydrostatic test the installation with this mixer installed. Damage to the ceramic cartridge may occur.
- Do not remove the ceramic cartridge from the mixer when installing.
- After installation, all connections must be checked for leaks.
- This mixer is not recommended for use in uncontrolled heating systems such as wet-backs or solar heating units unless a suitable tempering valve is fitted.
- If limited water flow is experienced, locate aerator and filter washers and clean away foreign material as required.
- It is the responsibility of the plumber to ensure a waterproof seal is achieved between the product and mounting surface. If in doubt about the quality of the seal, remove the product and reinstall.
- The Cold Water Flexible Hoses are fixed and cannot be replaced with other hoses.

MAINTENANCE AND CARE:

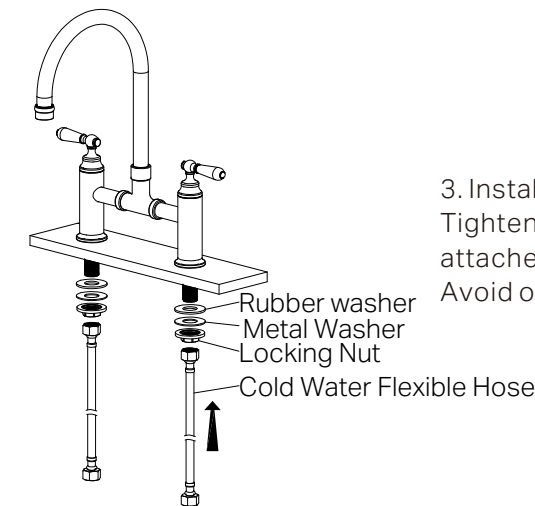
- Regularly check the mixer and connections for signs of wear or leaks.
- Clean the tap with mild soapy water to maintain its appearance, avoiding harsh chemicals and abrasive materials that may damage the finish.



1. Pre-drill or create two holes with diameter of 25mm at the proper location. Please note that the thickness of the surface should be between 3mm-30mm and the distance of two holes is 204mm.



2. Inset the mixer body and pass it through the hole in the counter-top. Ensuring the O-ring is properly seated within the bottom groove of the base plate to prevent water leakage through the cabinet.



3. Install the rubbers, metal washers and locking nuts. Tighten the locking nut securely to ensure the mixer is firmly attached to the counter-top. Avoid over tightening to prevent damage to the components.

4. Connect the cold water flexible hoses and hot water flexible hoses to the corresponding hot and cold water supply valves. Tighten the Female cone nuts by hand (According to flexible hose instruction). Ensuring they are secure yet not overtightened to avoid thread damage.

5. Check all connections for leaks. If any fittings are leaking, shut off the water as necessary to stop the leaks. Contact the supplier for warranty claim. Refer to warranty page.

FINAL INSPECTION:

- Ensure the tap operates smoothly and that there are no leaks at the connections.
- Clean the area and the newly installed tap with a soft cloth to remove any installation residues.

Nero



Lead Free