

Curved LED MIRROR CABINETS



Plug-In Wiring



220-240 Volts



Safe for Bathrooms

Features

- Adjustable colour temperature (6000, 4000, 3000K)
- Built-in demister
- Illuminating touch sensor for light and demister
- Internal 250V powerpoint for grooming and shaving products
- 3 mm thick glass mirror with frosted lighting
- Mirror treated with resin emulsion paint to protect against corrosion
- Soft close door with heavy duty full swing hinges
- Reversible design for left or right-hand door hinge (Arch cabinet with reversible door; pill and round cabinet can be rotated 180°)
- Arch & Pill models can be semi-recessed into the wall
- One adjustable internal board shelf
- Strong 15 mm thick backing board
- Wall mounting screws included
- 220-240V AC 50/60Hz with plug (licensed electrician required for hardwired installation)
- IP44 rating

Warning

- Please read the instructions and warnings carefully before installing the product and ensure this document is kept with the product for future reference to ensure product longevity and in the interest of safety.
- If any modification is made, it will invalidate the warranty and may render the product unsafe.
- This product is IP44 rated and suitable for installation outside the Zones 0 and 1, according to the IEEE regulations.
- It is not suitable for use in saunas, steam rooms and shower cubicles.
- Appropriate circuit protection should be available for the products.
- Take suitable precautions when handling products.
- Do not install and/or use if product is broken or unsafe.
- This product is designed for installation into a drywall, if mounting onto other substrate ensure appropriate fixing and batons (if required) are used and the load bearing of the wall is sufficient.
- Always switch off the electrical supply to the product at the mains during installation and maintenance.
- It is recommended that this product is installed by two people.



PLEASE LEAVE THIS GUIDE WITH THE OWNER



CHECK GOODS THOROUGHLY BEFORE INSTALLATION

Installation of received goods that are damaged, warped or faulty will void warranty. Ensure all items meet your plumbing requirements.



Arch **PSH450ARCH-LED**



Pill **PSH450PILL-LED**



Round **PSH750R-LED**

All installations must be carried out by a licensed tradesperson in accordance with all applicable Building, Plumbing and Electrical codes, and Federal, State, or Local Government Regulations in accordance with AS/NZS 3500 Plumbing & Drainage, AS/NZS 6400:2016 Water Efficient Products, and AS/NZS 3000:2007 Electrical standards for any installations to which these standards apply.

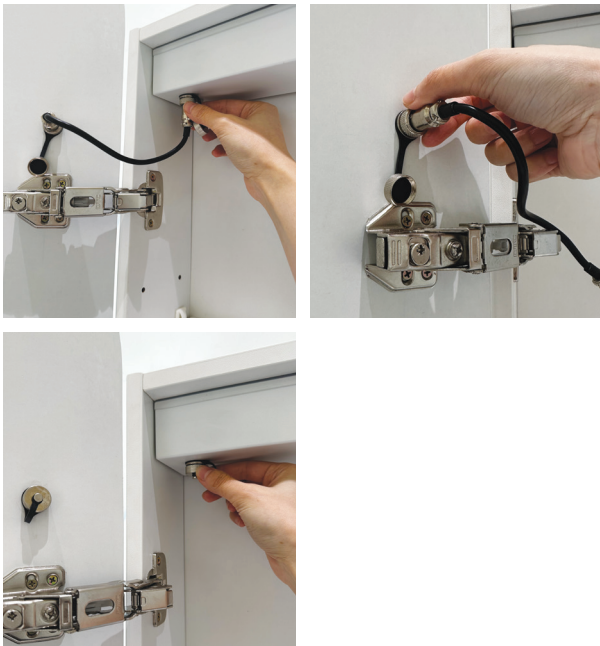
Instructions

To install the cabinet to the wall, follow the installation instructions on page 1 of the **Fienza Universal Cabinetry Installation Guide**.

Instructions for Reversing Door from Left Hinged to Right Hinged

Curved LED mirror cabinets are currently set as a **left-hinged door** cabinet. To change the cabinet to a **right-hinged door** simply follow the installation steps below.

1. Uninstall the electrical cable by unscrewing the cable from the electrical power box and the door. Screw the covers back onto the exposed wiring ports.



2. Uninstall the two door hinges from the cabinet body by using a Phillips head screwdriver to remove the screws. Lay the door face down on a soft non-abrasive surface and remove the hinges from the door.



3. Install the hinges onto the other side of the door by screwing the screws into the pre-drilled holes.



4. To re-install the hinges to the cabinet body, remove the plastic caps covering the hinge holes and install the hinges into the predrilled hinge holes and fasten with the screws.



5. Re-install the cable to the door and the electrical power box.



6. Re-install the plastic caps to cover the hinge holes on the opposite side of the cabinet body.



Operation



LED/
Demister

LED LIGHT & DEMISTER ON/OFF

Press the touch sensor button once to turn the light and demister on. When the sensor light is on, the light and demister are on. When the sensor light is off, the light and demister are off. The demister will automatically turn off after 60 minutes.

DIMMING

To increase and decrease the brightness of the light, hold your finger down on the sensor button to make the desired adjustment.

COLOUR TEMPERATURE CHANGE

When the light is on, press touch the sensor button to switch between 3000K (bright white), 4000K (warm yellow white), 6000K (cool White).

Cleaning & Care

- For best results, clean mirrors with a combination of 30% methylated spirits to 70% water and a soft, non-abrasive cloth designed for use on glass surfaces.
- Do not leave the mirror on for extended periods.
- Wipe off all water spillages immediately.

Warranties

Residential Warranty Periods

Applies to domestic uses and applications of Fienza® products, such as private dwellings and retirement villages.

Commercial Warranty Periods

Applies to commercial uses and applications of Fienza® products, including, but not limited to: commercial food premises such as restaurants; commercial accommodation such as hotels; hospitals and healthcare facilities; public amenities; and industrial, laboratory and manufacturing facilities.

Range/Component	Residential	Commercial
Cabinets (MDF only)	5 years replacement parts or product, 1 year labour	1 year replacement parts or product, 1 year labour
LED Mirrors	5 years replacement parts or product, 1 year labour	1 year replacement parts or product, 1 year labour
Spare Parts	1 year replacement parts or product	1 year replacement parts or product

Australian Consumer Law

Our products come with guarantees that cannot be excluded under the Australian Consumer Law. You are entitled to a replacement or refund for a major failure upon inspection by an authorised representative where a product is found to be defective in construction, material or assembly. You are also entitled to have the goods repaired or replaced if the goods fail to be of acceptable quality and the failure does not amount to a major failure, free of charge.

Warranty Conditions

- Installation has been carried out by a licensed tradesperson in accordance with all applicable Building, Plumbing and Electrical codes, and Federal, State, or Local Government Regulations in accordance with AS/NZS 3500 Plumbing & Drainage, AS/NZS 6400 Water Efficient Products, and AS/NZS 3000 Electrical standards for any installations to which these standards apply.
- All maintenance and adjustments to the product after the installation have been carried out by a licensed tradesperson.
- All care and cleaning instructions have been adhered to as prescribed.
- All goods of substandard quality manufacture (excluding imperfections permitted within AS1976 - Vitreous China used in Sanitary Applications) will be credited or replaced by Fienza when advised within the warranty period, subject to prior inspection and agreement.
- Proof of purchase is required for warranty claims.

Warranty Limitations

To the extent permitted under the Trade Practices Act and other relevant legislation, Fienza's liability is limited to:

- The cost of replacing the goods, or
- The cost of obtaining equivalent goods, or
- The cost of having the goods repaired.
- Fienza is not responsible for any lack of operation or performance of goods (or any loss or damage) where goods are used or adapted for use with other goods not supplied by Fienza.
- It is the responsibility of the customer and installer before installation to ensure that all components are correct and free of obvious visible faults.
- Fienza is not responsible for the labour and rectification costs incurred in the above circumstance.

Conditions for On-Site Warranty Service Calls

Fienza will charge a service fee for each visit to an installation by its technician where it is determined that the fault is due to poorly executed or unlicensed installation work or where the product is not a genuine Fienza product or where the product is outside the warranty period. This may be paid in advance by credit card over the phone to a Fienza technician attending the site and will be refunded if the Fienza product is found to be at fault.

For warranty support, please contact Fienza

15 Walter Crescent, Lawnton QLD 4501 PO Box 5381, Brendale QLD 4500
P 07 3490 6700 **F** 07 3490 6719 **E** help@fienza.com.au ABN 76 136 411 311



All installations must be carried out by a licensed tradesperson in accordance with all applicable Building, Plumbing and Electrical codes, and Federal, State, or Local Government Regulations in accordance with AS/NZS 3500 Plumbing & Drainage, AS/NZS 6400:2016 Water Efficient Products, and AS/NZS 3000:2007 Electrical standards for any installations to which these standards apply.