

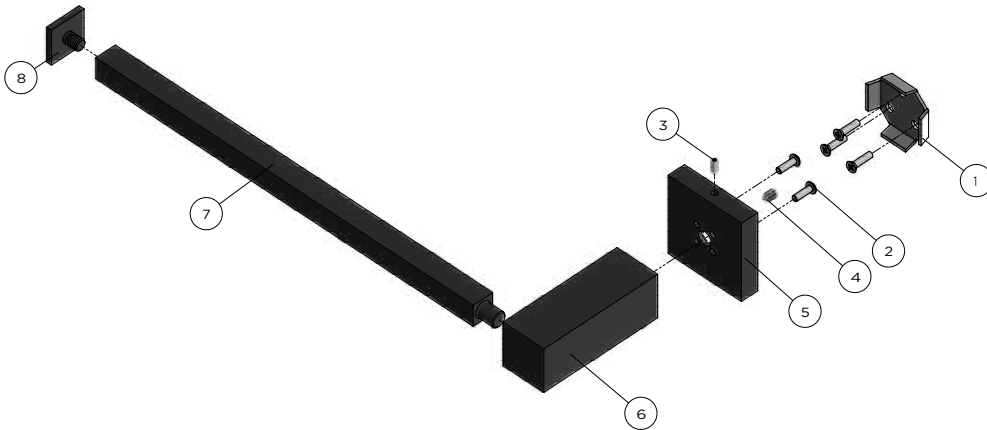
MR05

GUEST TOWEL RAIL

meir®



EXPLODED VIEW



- | | |
|---------------|--------------------|
| 1. Stator | 5. Back plate |
| 2. Screw | 6. Fixed seat |
| 3. Grub Screw | 7. Towel bar |
| 4. Screw | 8. Soldering Flake |

CARE

- Do not install tapware using any form of acetone silicones.
- Do not apply physical items (such as tools) directly to product.
- Never use house-hold or commercial detergents, citrus based cleaners, or abrasive cleaners.
- Clean using a mild washing soap solution rinsed, and dry with a soft cloth.
- Check for any product defects before installation.
- Refer to the installation manual for correct installation.

FEATURES

- Refer to the Meir website for warranty terms & conditions, and available finishes.
- Solid brass construction
- Box Weight 0.4kg

SPECIFICATIONS

