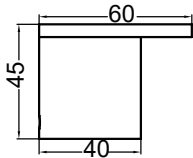


Bianca Bathroom Accessories

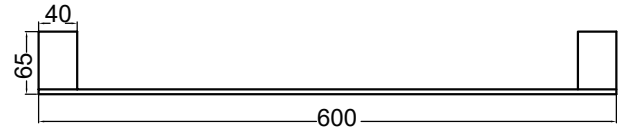
ROBE HOOK

NR9082CH / NR9082MB / NR9082BN
NR9082GM / NR9082BG



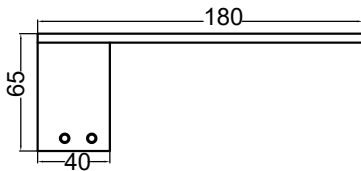
SINGLE TOWEL RAIL 600MM

NR9024CH / NR9024MB / NR9024BN
NR9024GM / NR9024BG



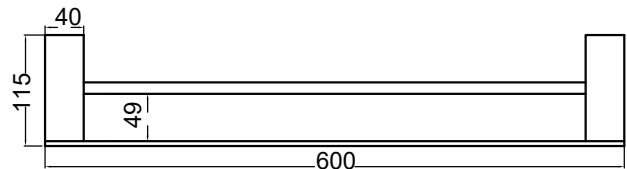
TOILET ROLL HOLDER

NR9086CH / NR9086MB / NR9086BN
NR9086GM / NR9086BG



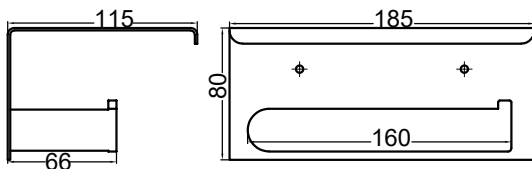
DOUBLE TOWEL RAIL 600MM

NR9024dCH / NR9024dMB / NR9024dBN
NR9024dGM / NR9024dBG



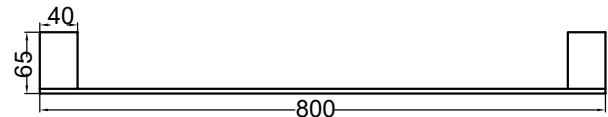
TOILET ROLL HOLDER

NR9086aCH / NR9086aMB / NR9086aBN
NR9086aGM / NR9086aBG



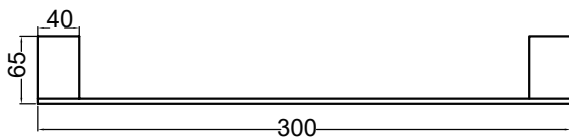
SINGLE TOWEL RAIL 800MM

NR9030CH / NR9030MB / NR9030BN
NR9030GM / NR9030BG



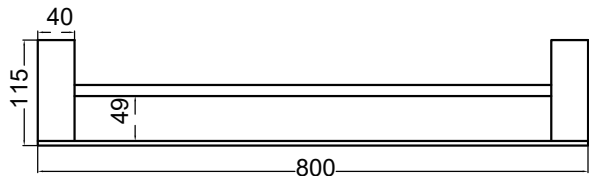
HAND TOWEL RAIL

NR9080CH / NR9080MB / NR9080BN
NR9080GM / NR9080BG



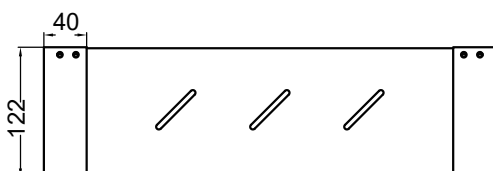
DOUBLE TOWEL RAIL 800MM

NR9030dCH / NR9030dMB / NR9030dBN
NR9030dGM / NR9030dBG / NR9030dBZ



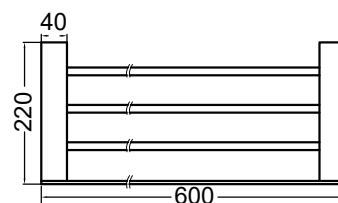
METAL SHELF

NR9087aCH / NR9087aMB / NR9087aBN
NR9087aGM / NR9087aBG

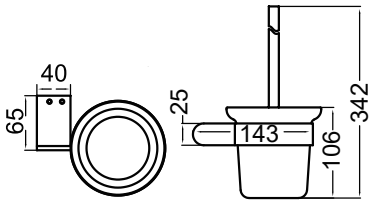


TOWEL RACK

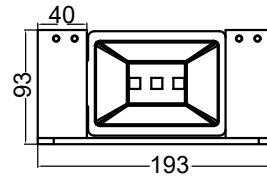
NR9089CH / NR9089MB / NR9089BN
NR9089GM / NR9089BG



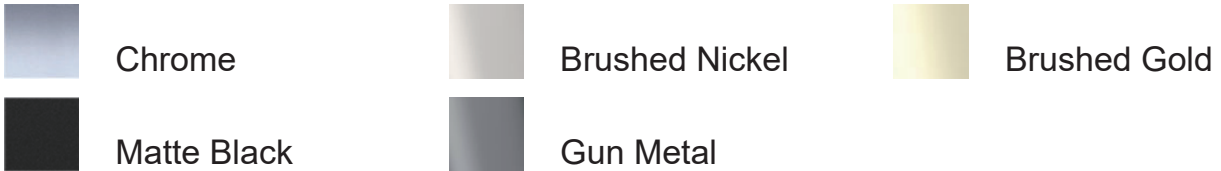
TOILET BRUSH HOLDER
 NR9088CH / NR9088MB / NR9088BN
 NR9088GM / NR9088BG



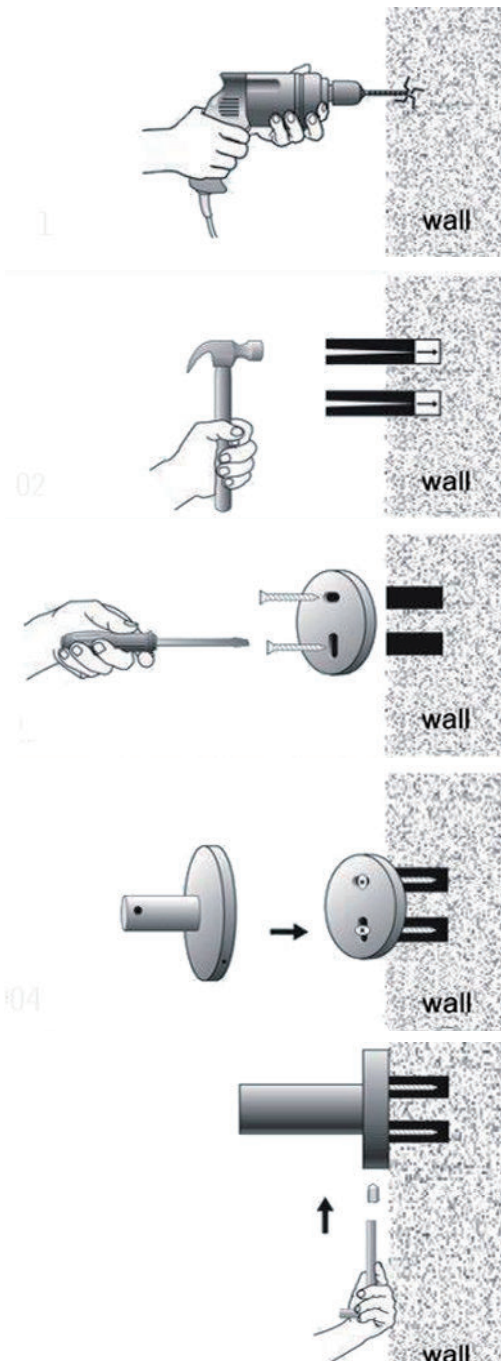
SOAP DISH HOLDER
 NR9081CH / NR9081MB / NR9081BN
 NR9081GM / NR9081BG



Available Colour



Installation Instruction



1. Put the fixing blocks (piece) over on the right place on the wall , and stay level, use marking pen through the holes of fixing block to mark out fixing spots on the wall. Then drill holes by electric hand drill with 6mm drilling bit on the spots.

2. Put the expansion plugs into the wall by hammer.

3. Put fixing block cover on the holes and fix firmly by expansion screws.

4. Put the base of bathroom accessory cover on the fixing blocks.

5. Screw grub screws into the base, make it against to the fixing block tight and firm.