

LIFE

WALL MOUNTED SINGLE STALL URINAL

CODE:
TOP WATER INLET J6000
BOTTOM WATER INLET J6010

FEATURES

- ATTRACTIVE YET FUNCTIONAL WALL HUNG URINAL
- TOP OR BACK WATER ENTRY OPTIONS
- EASI-FIX STURDY MOUNTING BRACKET AND FIXINGS
- REMOVABLE, VANDAL RESISTANT SS WASTE DOME
- TRAP FITTING INCLUDED

COMPONENTS

Urinal	Life Wall Hung Urinal - Top water entry	OR	J6000
	Life Wall Hung Urinal - Back water entry		J6010
Seal	Rubber seal - 19mm top water entry	OR	XJ601
	Rubber seal - 19mm back water entry		XJ602
Waste Dome	Life S/Steel Waste Dome - Anti-vandal		Xj600
Trap	Wall Mount Urinal Trap		XJ603
Trap Seal	50mm Keeseal		X016
Wall Bracket	Life Wall Mount Urinal Bracket Kit		XJ604
Bolt Caps	Life Urinal Bolt Cover Cap (Set of 2)		XJ605
Template	Life Urinal Installation Template		XJ606

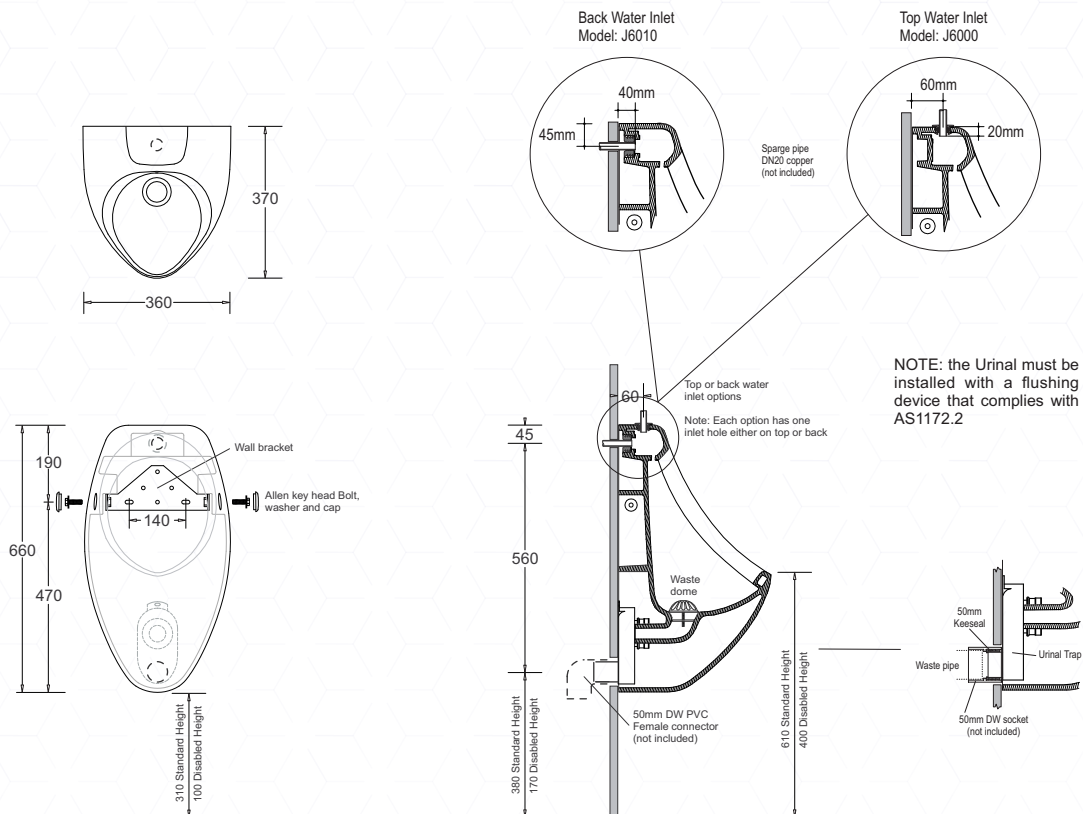
Optional

Flush System	Electronic, Smart Demand sensor flushing system	J6200
Cistern	Wall Mounted, Pull-Chain cistern	RG21015PC



WARRANTY

25 YEARS - REFER TO T&CS AT johnsonsuiss.com.au



TECHNICAL DATA SHEET

SUPERSEDES ALL PREVIOUS ISSUES

All dimensions are in millimetres and are subject to normal manufacturing variation. As product development is ongoing BPA reserves the right to vary specifications without notice.
Bathroom Products Australia P/L ABN 87 079 297 617